



KEMENTERIAN SEKRETARIAT NEGARA RI
SEKRETARIAT WAKIL PRESIDEN

How Can Indonesia's Social Assistance Program Be More Child Sensitive?



Bambang Widianto

Deputy for Social Welfare and Poverty Alleviation/
Executive Secretary to The National Team for the Acceleration of Poverty
Reduction Office of the Vice President

Child Poverty and Social Protection Conference
10–11 September 2013

OUTLINE OF PRESENTATION

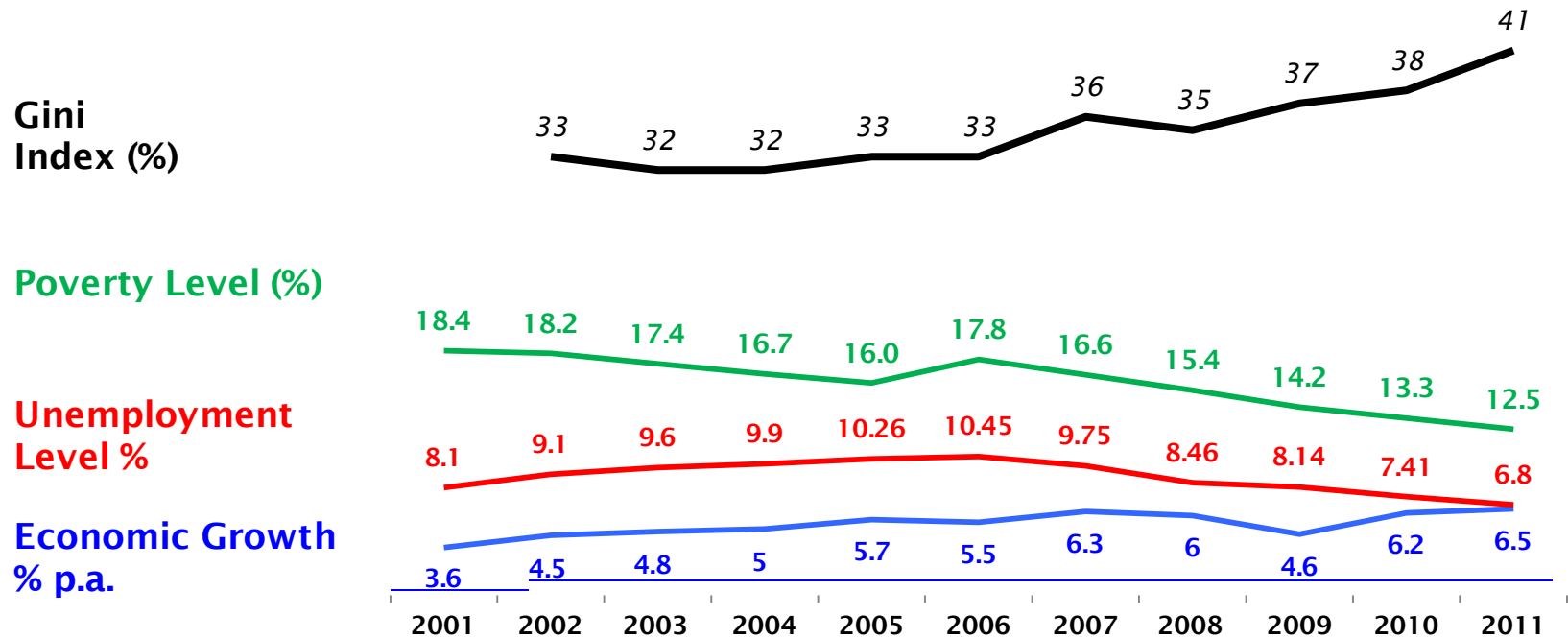
- Poverty in Indonesia
- Child Poverty in Indonesia
- Children In Poverty Alleviation Programs
- Closing Remarks



POVERTY IN INDONESIA



Improved Economic Conditions and declining poverty levels



| Income per Capita (U.S.\$) | 772 | 922 | 1098 | 1186 | 1318 | 1663 | 1938 | 2270 | 2350 | 3005 | 3543 |
|----------------------------|-----|-----|------|------|------|------|------|------|------|------|------|
|----------------------------|-----|-----|------|------|------|------|------|------|------|------|------|

Source: BPS

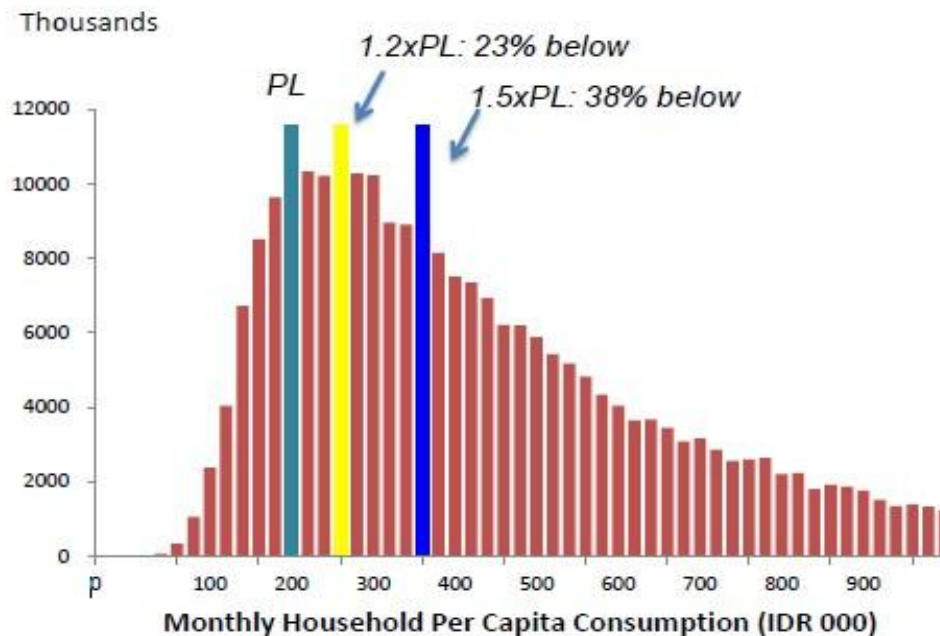
- However, economic growth has not been fast enough: (a) Compared to the period 1985-1995, (b) Compared to other countries such as India and China
- Despite the decrease in the level of poverty and unemployment, the inequality gap increases



But still with Great Vulnerability

**Below Poverty Line: 12% of population (approx 29 million people)
but about 40% population lives around Poverty Line**

2012 Monthly Household Percapita Consumption



Poverty Line

Approx. USD (PPP) 38/capita/mo.
(national average)
For capital city Jakarta approx.
USD (PPP) 57/capita/mo.

High vulnerability
around the Poverty Line

Poverty programs needs
to **cover the poor and
the near poor**

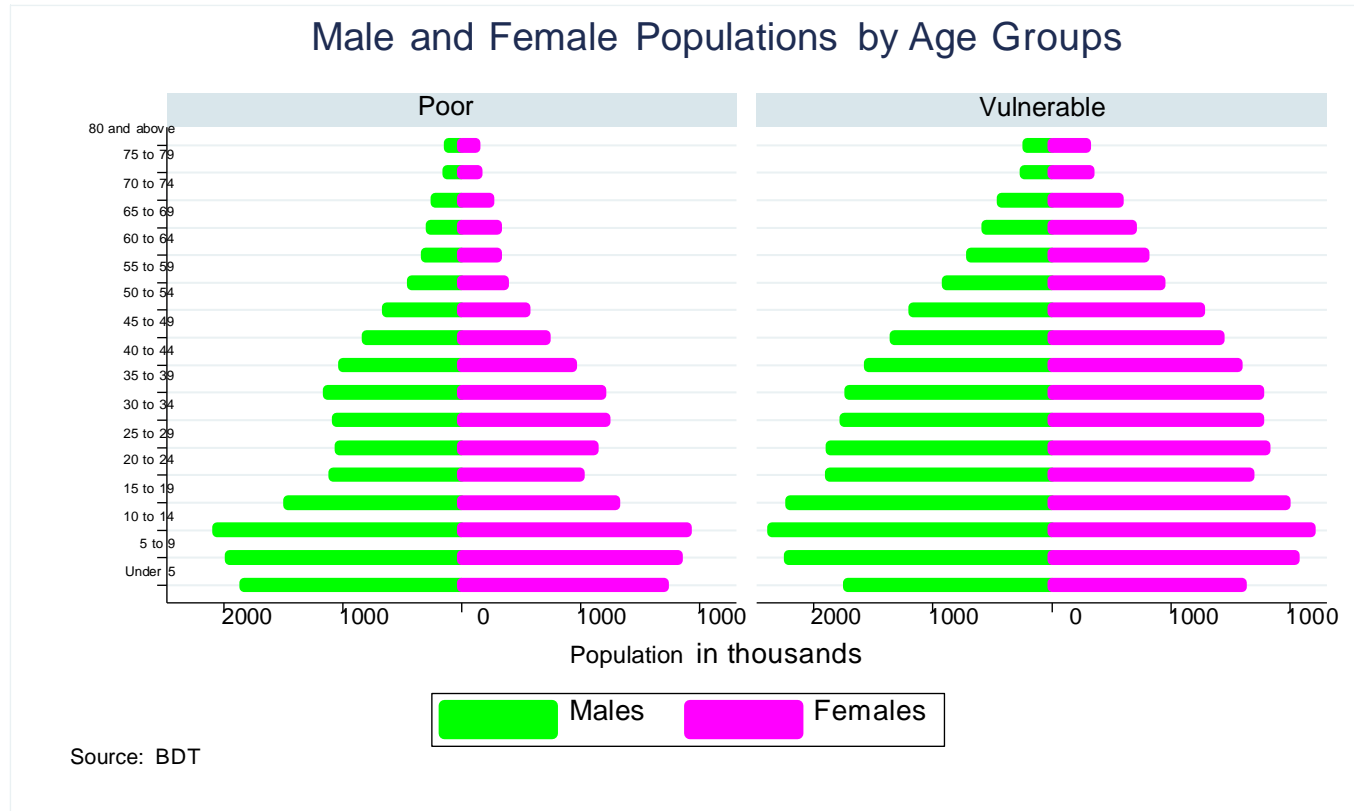
Source: 2012 Susenas



CHILD POVERTY IN INDONESIA



HIGH CHILD DEPENDENCY RATION AMONG POOR HOUSEHOLDS

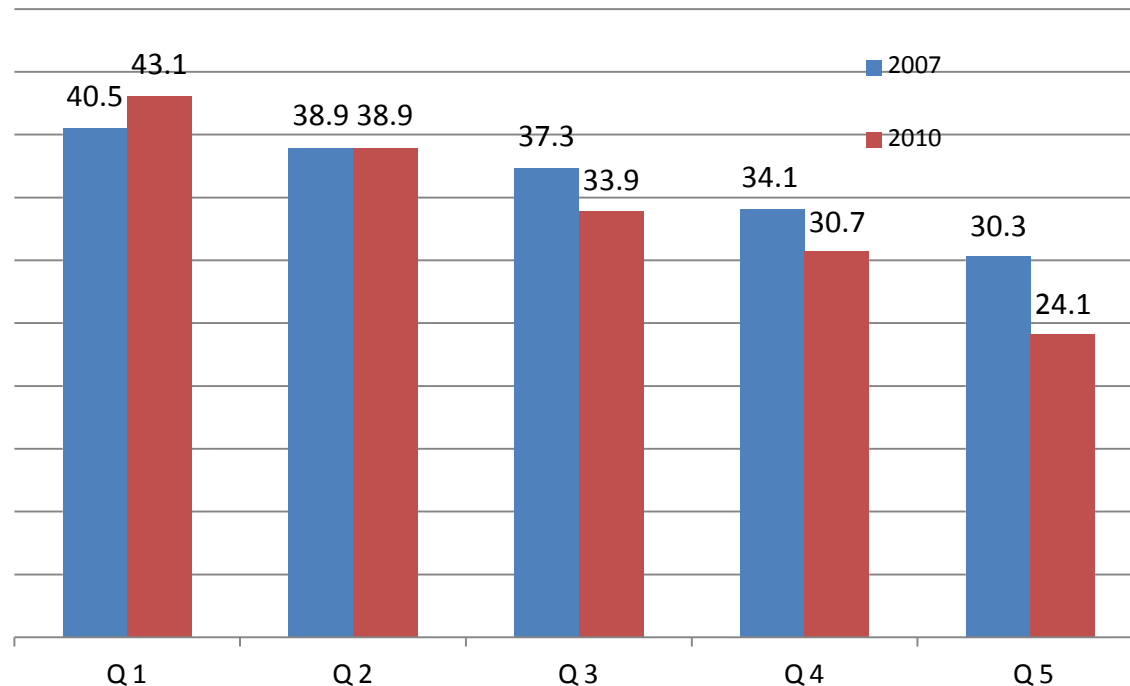


Youth still vulnerable as they move into the labor force



CHILD HEALTH: STUNTING RATES

Malnutrition can result in a significant loss in lifetime earnings and significant impact on national GDP.



Between 2007 and 2010, there was an increase in the stunting rate For the poorest Q1, and no improvement for Q2

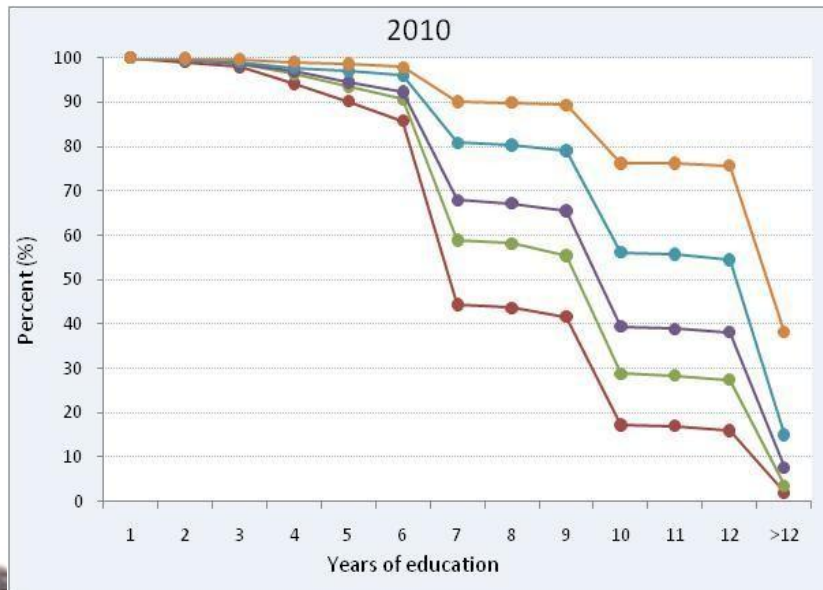
Source: Riskesdas 2007 and 2010.
Q is Quintiles of monthly per capita expenditure



CHILD EDUCATION

- There are 23.4 million Children in the three lowest deciles
- In the Decile 1 alone, there are still 4.4 million aged 6-18 who are out of school

| | |
|----------|--------------|
| Decile 1 | 11.3 million |
| Decile 2 | 7.0 million |
| Decile 3 | 5.1 million |



- Among those in school, children from the lowest quintile is the most vulnerable – with the highest drop-out rates



CHILDREN IN POVERTY ALLEVIATION PROGRAMS



THREE CLUSTERS OF POVERTY ALLEVIATION PROGRAMS IN INDONESIA

Cluster 1: Family-based integrated social assistance programs

Unconditional cash transfer (BLSM), Conditional cash transfer (PKH),
Rice subsidy for the poor (RASKIN), Scholarship for poor families (BSM),
Health insurance for the poor (JAMKESMAS)

Cluster 2: Community-based social assistance program

Program Nasional Pemberdayaan Masyarakat (PNPM Mandiri), or
National Program for Community Empowerment

Cluster 3: Development of micro and small enterprises

Economic Empowerment, Livelihoods and Financial Inclusion



FIRST REFORM: TARGETING OF SOCIAL PROTECTION PROGRAMS

Criteria for Participation in the Social Protection Program

Criteria for Participation in a Social Protection Program set by the relevant Minister or Head of the Region

Unified Database
Social Protection Program

Unified Database Social Protection Program

Health Program

Education Program

Condition Cash Transfer Program

Other programs

A list of names and address for households participating in individual programs is produced





PROGRAM KELUARGA HARAPAN

(Conditional Cash Transfer)

- Conditionality : Health and Education
- Program Facilitator at Kecamatan (sub-district)

Challenges:

- Keeping children at school
- Bringing out-of-school children back to school
- Family Development Session for family to pay greater attention to children's health and education status

Expanding coverage: (i) for all decile 1 households, (ii) to Eastern provinces



BSM BANTUAN SISWA MISKIN

(Education Assistance for the Poor Student)

- Cash for children from poor households
- Payment by semester

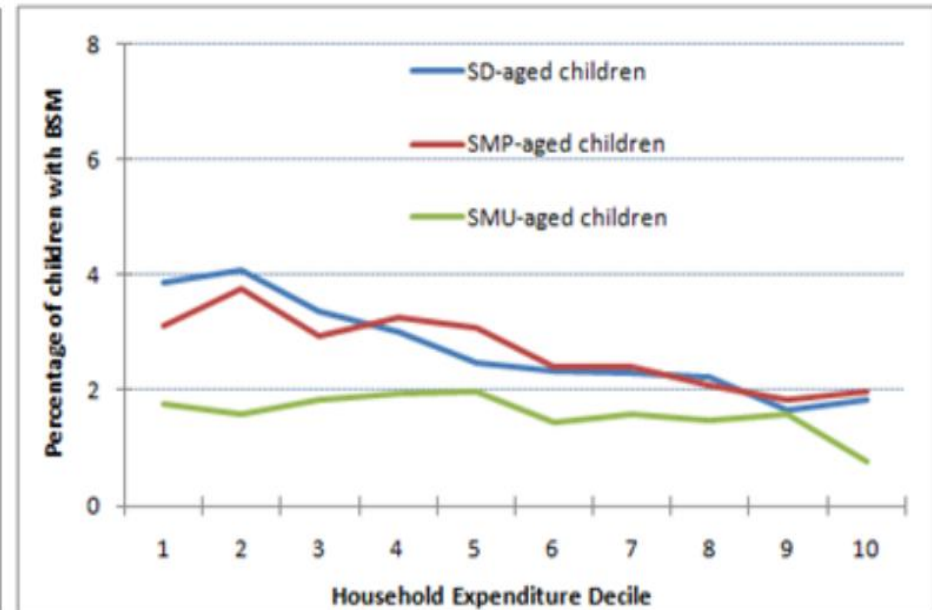
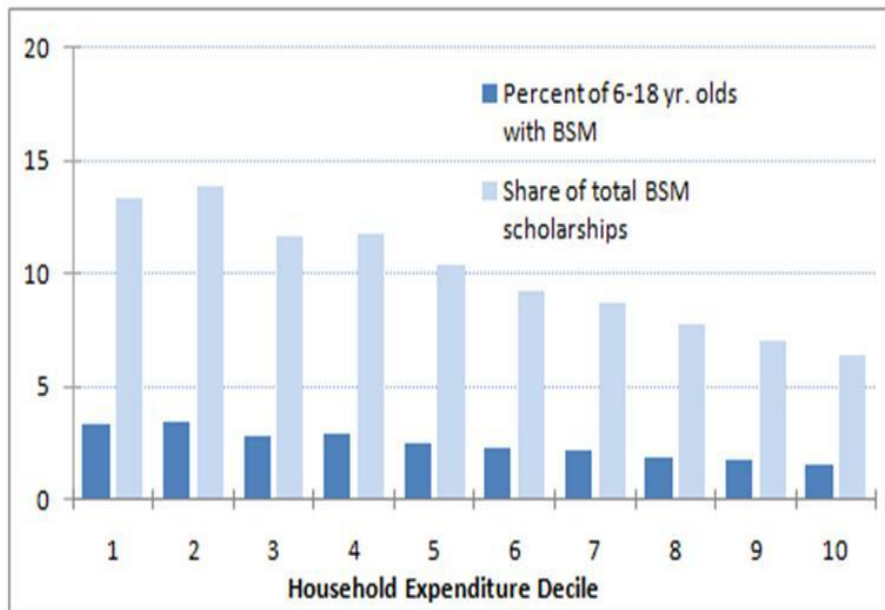
Challenges:

- Better targeting is needed: Kartu Perlindungan Sosial
- Socialization to schools and children/households
- Better mechanism to bring back out-of-school children back to school: amount of benefit & payment schedule



BSM: BETTER TARGETING IS NEEDED

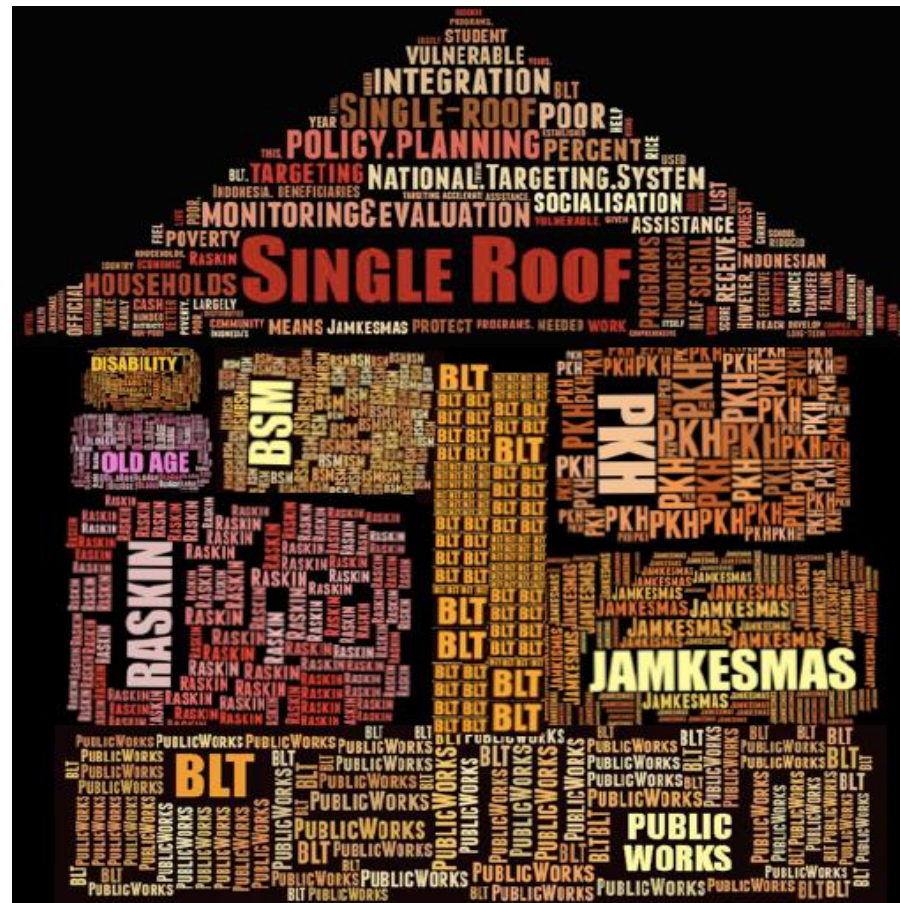
Only **4%** of BSM-SD & SMP benefits reached children in the bottom 10 percent (deciles 1). Less than **2%** of children of SMA age receive BSM benefits



Sources: Susenas (2009) & World Bank (2012)



NEXT STAGES OF REFORM: A STRONG BUILDING USING THE CURRENT BUILDING BLOCKS



Source: Alatas (2012)



KARTU PERLINDUNGAN SOSIAL (KPS): AN ATTEMPT TO REFORM



Starting in 2013, the social protection card has been distributed to 15.5 million poor and vulnerable HHs delivered directly to the beneficiaries via Post Office (PT Pos)

The first social protection card in Indonesia which can be used for multiple programs: RASKIN, BSM, BLSM



CLOSING REMARKS



CHALLENGES FOR CHILD SENSITIVE SOCIAL PROTECTION

- Low and unequal access to services – Eastern Indonesia and lagging regions, remote communities
- Targeting mechanism – identify first in order to reach most vulnerable children.
- Trade-offs between budget allocations for social protection and other social policies; health and education
- Big Gaps in access to social services



POTENTIAL INTEGRATION OF CHILD SENSITIVE SOCIAL PROTECTION

- KPS can be evidence of entitlement to social protection and poverty reduction programs
- Integrated services and mobile services to reduce transport costs as access barrier
- More coordinated efforts are needed to integrate child protection within social protection policies and programs at national and sub-national levels



FURTHER INFO:

TNP2K → <http://tnp2k.go.id>

KPS → <http://kps.tnp2k.go.id>

Basis Data Terpadu → <http://bdt.tnp2k.go.id>

THANK YOU

